



CARBITOOL

Product Catalogue

Circular Saw Blades

STATEMENT OF QUALITY



The standard in wood tooling

Carbitool is a major supplier of Circular Saw Blades to industry and retail, with over 50 years of Expertise, Market Knowledge and providing Technical Support. Carbitool Circular Saw Blades are specifically designed and manufactured for:

- Materials • Accuracy • Speed • Quality



Manufacturing
Saw Blades



Key Blade Features:

- Industrial quality
- ISO9001 Quality Certified
- Pre-hardened cold rolled steel
- Precision Vollmer CNC ground
- Laser cut blades and expansion slots
- Levelled, tensioned and balanced
- Automatic brazing
- Micro-grain carbide tips
- Optimum teeth hook angles
- Anti-vibration technology

And the best part is this Carbitool offer has been thoroughly tested at our laboratory in Melbourne.

www.carbitool.com.au



Wood Cutting – Standard Kerf, Carbide Tipped

- Suitable for Portable machines
- Alternative bevel top grind allows for increased cutting speeds
- Hardened tempered steel body for durability and long service life



Precision micro-grain grade of carbide teeth ensures smooth cutting

BLADE SELECTION

Tooth Count	20-24T	30T	40T	60T
Cut	Ripping	Glue Line Rip	General Purpose	Fine Cross Cutting
Material Type	Soft and Hardwood	Soft and Hardwood	Soft and Hardwood, Plywood	Soft and Hardwood, Plywood, Melamine
Material Thickness	35mm Maximum	30mm Maximum	30mm Maximum	25mm Maximum

Product Group CB400
Discount Group C0102

★Good ★★Effective ★★★Optimal

Part No.	Dia. mm	Teeth	Kerf mm	Bore mm	Barcode	Cut Type	Material			
							Wood	Plywood	Melamine	Plastic
BS1602024	160	24T	2.6	20	9314350046801	Cross cut	★★	★		
						Rip Cut	★★★			
						Cut Off		★	★	★
BS1602030	160	30T	2.6	20	9314350046818	Cross cut	★★	★		
						Rip Cut	★★★			
						Cut Off		★	★	★
BS1842024	184	24T	2.6	20	9314350047792	Cross cut	★★	★		
						Rip Cut	★★★			
						Cut Off		★	★	★
BS1842040	184	40T	2.6	20	9314350046825	Cross cut	★★	★★	★	
						Rip Cut	★★			
						Cut Off		★	★	★
BS1842060	184	60T	2.6	20	9314350046337	Cross cut	★★★	★★★	★★	
						Rip Cut	★			
						Cut Off		★★	★★	★★
BS2102524	210	24T	2.8	25	9314350046344	Cross cut	★★	★		
						Rip Cut	★★★			
						Cut Off		★	★	★
BS2102540	210	40T	2.8	25	9314350046351	Cross cut	★★	★★	★	
						Rip Cut	★★			
						Cut Off		★	★	★
BS2352520	235	20T	3.0	25	9314350046368	Cross cut	★★	★		
						Rip Cut	★★★			
						Cut Off		★	★	★
BS2352540	235	40T	3.0	25	9314350046375	Cross cut	★★	★★	★	
						Rip Cut	★★			
						Cut Off		★	★	★
BS2352560	235	60T	3.0	25	9314350046382	Cross cut	★★★	★★★	★★	
						Rip Cut	★			
						Cut Off		★★	★★	★★

Safety Note: • Always ensure adequate guarding is in place • Always wear eye, hand & hearing protection.
• Ensure work piece is securely clamped • Follow machine manufacturers operating and safety instructions.

Wood Cutting – Ultra Thin Kerf, Carbide Tipped

- Suitable for Cordless and Portable machines
- Require less cutting power – more control over the cut for safer operation
- Alternative bevel top grind allows for increased cutting speeds
- Precision Micro-grain grade of carbide teeth ensure smooth cutting
- Hardened tempered steel body for durability and long service life



BLADE SELECTION

Tooth Count	24T	40T	60T
Cut	Ripping	General Purpose	Fine Cross Cutting
Material Type	Soft and Hardwood	Soft and Hardwood, Plywood	Soft and Hardwood, Plywood, Chipboard
Material Thickness	30mm Maximum	20mm Maximum	15mm Maximum

Product Group	Discount Group
CB401	C0102

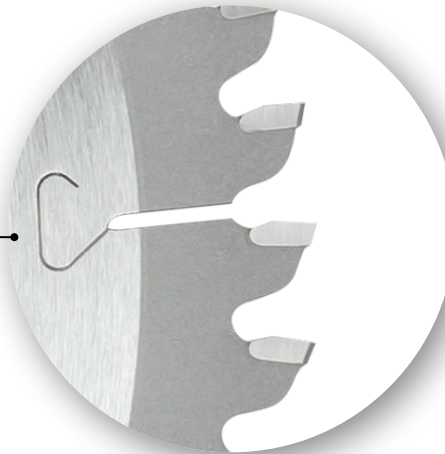
★Good ★★Effective ★★★Optimal

Part No.	Dia. mm	Teeth	Kerf mm	Bore mm	Barcode	Cut Type	Material			
							Wood	Plywood	Melamine	Plastic
BU1401024	140	24T	1.5	10	9314350046399	Cross Cut	★★	★		
						Rip Cut	★★			
						Cut Off		★	★	★
BU1652024	165	24T	1.6	20	9314350046405	Cross Cut	★★	★		
						Rip Cut	★★★			
						Cut Off		★	★	★
BU1652040	165	40T	1.6	20	9314350046412	Cross Cut	★★★	★		
						Rip Cut	★★			
						Cut Off		★★	★★	★★
BU1842024	184	24T	1.6	20	9314350046429	Cross Cut	★	★		
						Rip Cut	★★★			
						Cut Off		★	★	★
BU1842040	184	40T	1.6	20	9314350046436	Cross Cut	★★	★★	★	
						Rip Cut	★★			
						Cut Off		★★	★★	★★
BU1842060	184	60T	1.6	20	9314350046443	Cross Cut	★★★	★★★	★★	
						Rip Cut	★			
						Cut Off		★★	★★	★★
BU2352540	235	40T	2.4	25	9314350046832	Cross Cut	★★	★★	★	
						Rip Cut	★★			
						Cut Off		★	★	★

Safety Note: • Always ensure adequate guarding is in place • Always wear eye, hand & hearing protection.
 • Ensure work piece is securely clamped • Follow machine manufacturers operating and safety instructions.

Aluminium Cutting, Carbide Tipped

- Suitable for Mitre saw and Drop saw machines
- Cuts aluminium, non-ferrous metals and plastics
- Negative hook teeth to avoid self-feeding of materials
- Anti-vibration technology for stability and accuracy
- High quality pre-hardened cold rolled steel for superior tooth support, durability and long service life



Triple chip tungsten carbide precision tooth grinding for smooth and accurate cuts

BLADE SELECTION

Tooth Count	56T	60T	64T	80T	100T
Cut	Cut Off				
Material Type	Aluminium, Copper, Brass, Plastic				
Material Thickness	6mm Maximum				

Product Group	Discount Group
CB402	C0102

★ Good ★★ Effective ★★★ Optimal

Part No.	Dia. mm	Teeth	Kerf mm	Bore mm	Barcode	Cut Type	Material	
							Aluminium	Plastic
BA1602656	160	56T	2.2	1"	9314350046450	Cut Off	★★★	★★★
BA1842064	184	64T	2.2	20	9314350046467	Cut Off	★★★	★★★
BA2103060	210	60T	2.4	30	9314350046474	Cut Off	★★★	★★★
BA2352580	235	80T	2.6	25	9314350046481	Cut Off	★★★	★★★
BA2543080	254	80T	2.8	30	9314350046498	Cut Off	★★★	★★★
BA30530100	305	100T	2.8	30	9314350046504	Cut Off	★★★	★★★

Safety Note: • Always ensure adequate guarding is in place • Always wear eye, hand & hearing protection.
• Ensure work piece is securely clamped • Follow machine manufacturers operating and safety instructions.

Wood Cutting – Professional, Standard Kerf, Carbide Tipped

- Suitable for Table saw and Cut Off saw machines
- Anti-vibration technology for stability and accuracy
- High quality pre-hardened cold rolled steel for superior tooth support, durability and long service life
- Bores incorporates universal pin holes



Precision tooth grinding for smooth, accurate cuts

BLADE SELECTION

Tooth Count	40T	60T	80T	100T
Cut	General Purpose	Cross Cutting	Fine Cross Cutting	Fine Cross Cutting
Material Type	Soft and Hardwood, Plywood	Soft and Hardwood, Plywood, Melamine	Soft and Hardwood, Plywood, Melamine	Soft and Hardwood, Plywood, Melamine
Material Thickness	40mm Maximum	40mm Maximum	20mm Maximum	20mm Maximum

Product Group	Discount Group
CB403	C0102

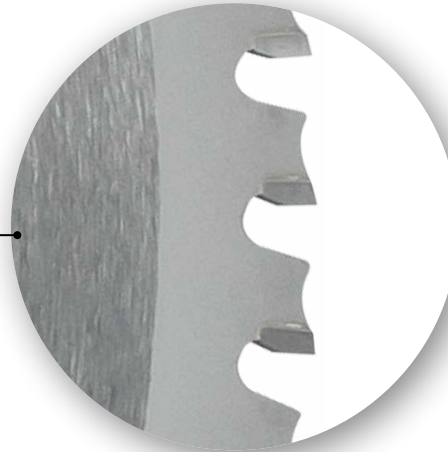
★Good ★★Effective ★★★Optimal

Part No.	Dia. mm	Teeth	Kerf mm	Bore mm	Barcode	Cut Type	Material			
							Wood	Plywood	Melamine	Plastic
BP2543040	254	40T	3.2	30	9314350046511	Cross Cut	★★	★★	★	
						Rip Cut	★★			
BP2543060	254	60T	3.2	30	9314350046528	Cross Cut	★★★	★★	★	
						Rip Cut	★			
BP2543080	254	80T	3.2	30	9314350046535	Cross Cut	★★★	★★★	★★	
						Cut Off		★★★	★★	★★★
BP3053060	305	60T	3.2	30	9314350046542	Cross Cut	★★	★★	★	
						Rip Cut	★			
						Cut Off		★★	★★	★★
BP30530100	305	100T	3.2	30	9314350046559	Cross Cut	★★★	★★★	★★	
						Cut Off		★★★	★★	★★★

Safety Note: • Always ensure adequate guarding is in place • Always wear eye, hand & hearing protection.
 • Ensure work piece is securely clamped • Follow machine manufacturers operating and safety instructions.

Metal Cutting – Standard Kerf, Carbide Tipped

- Suitable for Portable machines
- Anti-vibration technology for maximum stability, keeping blade cool, accurate cutting
- High quality pre-hardened cold rolled steel for superior tooth support, durability and long service life



Specially ground teeth for speed, giving burr free cuts in metal

BLADE SELECTION

Tooth Count	48T	80T
Cut	Cross Cutting	
Material Type	Aluminium, Copper, Brass and Steel	
Material Thickness	6mm Maximum	

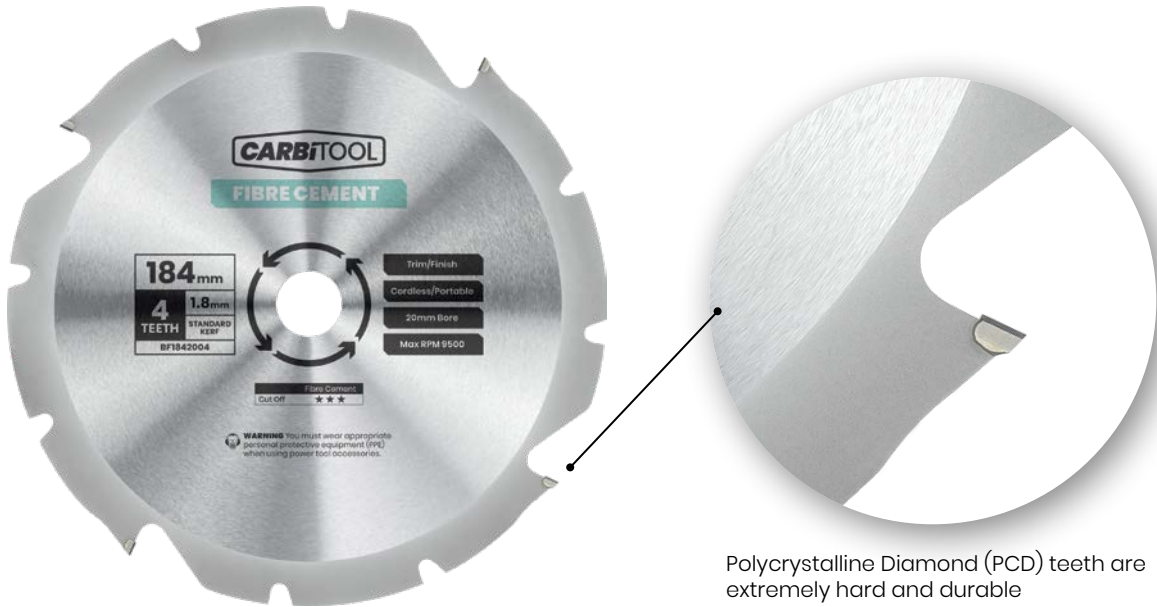
Part No.	Dia. mm	Teeth	Kerf mm	Bore mm	Barcode	Cut Type	Material				
							Aluminium	Soft steel	Copper	Sheet Metal	Cable Tunnels
BM1842048	184	48T	2.0	20	9314350046566	Cut Off	★★★	★★★	★★★	★★★	★★★
BM3552680	355	80T	2.4	25.4	9314350046573	Cut Off	★★★	★★★	★★★	★★★	★★★

★Good ★★Effective ★★★Optimal

Safety Note: • Always ensure adequate guarding is in place • Always wear eye, hand & hearing protection.
 • Ensure work piece is securely clamped • Follow machine manufacturers operating and safety instructions.

Fibre Cement – Standard Kerf, PCD Teeth

- Suitable for Portable machines
- Specifically designed for cutting fibre cement products
- PCD Grade teeth for up to 17 times longer life than carbide teeth
- Hardened tempered steel body for superior tooth support, durability and long service life



Polycrystalline Diamond (PCD) teeth are extremely hard and durable

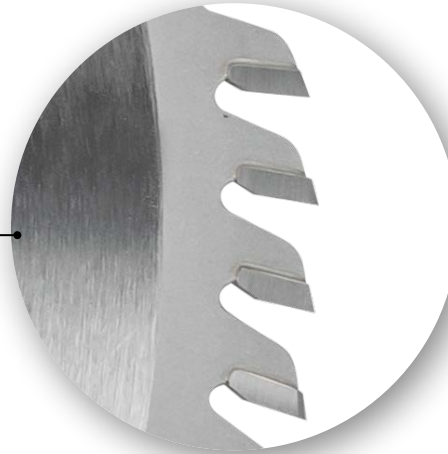
Tooth Count	4T
Cut	Cut Off
Material Type	Fibre Cement
Material Thickness	-

Product Group	Discount Group						★Good ★★Effective ★★★Optimal	
CB405	C0102							
Part No.	Dia. mm	Teeth	Kerf mm	Bore mm	Barcode	Cut Type	Material	Fibre Cement
BF1842004	184	4T	1.8	20	9314350046580	Cut off	★★★	

Safety Note: • Always ensure adequate guarding is in place • Always wear eye, hand & hearing protection.
 • Ensure work piece is securely clamped • Follow machine manufacturers operating and safety instructions.

Laminate Cutting, Carbide Tipped

- Suitable for Table saw & Cut Off saw machines
- Anti-vibration technology for stability and accuracy
- High quality pre-hardened cold rolled steel for durability and long service life
- Bore Incorporates universal Drive Pin Holes



Precision ground Sub-micro grain grade of Carbide Teeth ensure long cutting life

BLADE SELECTION

Tooth Count	80T	96T	108T
Cut		Cut Off	
Material Type	Veneered Plywood, Melamine, MDF, Chipboard		
Material Thickness	30mm Maximum		

Product Group	Discount Group
CB406	C0102

★ Good ★★ Effective ★★★ Optimal

Part No.	Dia. mm	Teeth	Kerf mm	Bore mm	Barcode	Cut Type	Material			
							Veneered plywood	Melamine	MDF	Chipboard
BL2503080	250	80T	3.2	30	9314350047587	Cut off	★★★	★★★	★★★	★★★
BL3003096	300	96T	3.2	30	9314350047594	Cut off	★★★	★★★	★★★	★★★
BL35030108	350	108T	3.5	30	9314350047600	Cut off	★★★	★★★	★★★	★★★

Safety Note: • Always ensure adequate guarding is in place • Always wear eye, hand & hearing protection.
• Ensure work piece is securely clamped • Follow machine manufacturers operating and safety instructions.

Mitre Saw Cutting, Carbide Tipped

- Suitable for Mitre saw and Drop saw machines
- Cuts aluminium, non-ferrous metals and plastics
- Negative hook teeth to avoid self-feeding of materials
- Anti-vibration technology for stability and accuracy
- High quality pre-hardened cold rolled steel for durability and long service life



Triple chip tungsten carbide precision tooth grinding for smooth and accurate cuts

BLADE SELECTION

Tooth Count	48T	60T
Cut	Cross Cutting	
Material Type	Soft and Hardwood, Plywood, Melamine	
Material Thickness	40mm Maximum	

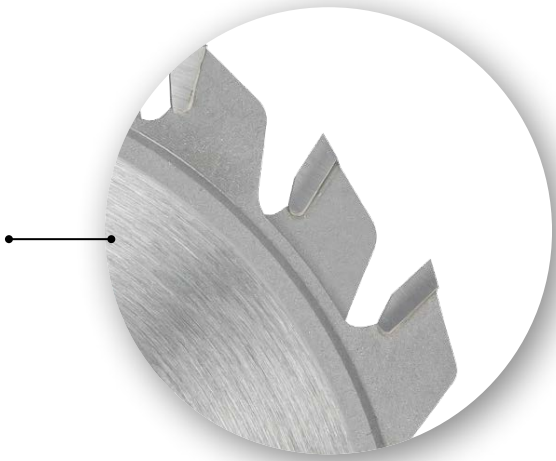
Part No.	Dia. mm	Teeth	Kerf mm	Bore mm	Barcode	Cut Type	Material			
							Wood	Plywood	Melamine	Plastic
BMN2163048	216	48T	2.8	30	9314350047631	Cut Off	★★	★★	★★	★★
BMN2163060	216	60T	2.8	30	9314350047648	Cut Off	★★★	★★★	★★	★★★★
BMN2503048	250	48T	3.2	30	9314350047655	Cut Off	★★	★★	★★	★★
BMN2503060	250	60T	3.2	30	9314350047662	Cut Off	★★	★★	★★	★★

★Good ★★Effective ★★★Optimal

Safety Note: • Always ensure adequate guarding is in place • Always wear eye, hand & hearing protection.
 • Ensure work piece is securely clamped • Follow machine manufacturers operating and safety instructions.

Split Scoring – Standard Kerf, Carbide Tipped

- Used on Table saw with Laminate saw blades. Adjusted to the kerf of the main saw blades with supplied shims
- Anti-vibration technology for stability and accuracy
- High quality pre-hardened cold rolled steel for durability and long service life



Precision ground Sub-micro grain grade of Carbide Teeth ensure long cutting life

Product Group **Discount Group**
CB408 C0102

★Good ★★Effective ★★★Optimal

Part No.	Dia. mm	Teeth	Kerf mm	Bore mm	Barcode	Cut Type	Material	
							Plywood	Melamine
BSSI202012	120	12T + 12T	Adjustable	20	9314350047617	Scoring	★★★	★★★
BSSI202212	120	12T + 12T	Adjustable	22	9314350047624	Scoring	★★★	★★★

Safety Note: • Always ensure adequate guarding is in place • Always wear eye, hand & hearing protection.
• Ensure work piece is securely clamped • Follow machine manufacturers operating and safety instructions.



Carbitool is a division of Sutton Tools Pty. Ltd. ABN. 12 004 175 731

Head Office

12 Levanswell Road, Moorabbin 3189, Victoria, Australia

T +61 3 9555 2966 **F** +61 3 9555 8695 **E** sales@carbitool.com.au

www.carbitool.com.au

